

# DELTA PRO Flood Lighting



## Application

Security, Facade, Industrial, Warehouse, Community, Architectural and Landscape.

## Characteristic

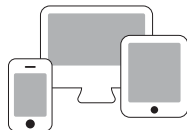
Light source	: Mid Power LED
Optical	: Multiple Beam Symmetrical & Asymmetrical
Power correction factor	: > 0.9
Insulation	: Class 1
Compliance	: MS IEC 60598-1 : MS IEC 60598-2-5
Ingress Protection (IP)	: IP66
Protection against surge (SPD)	: 20KA
Colour rendering (CRI)	: ≥ 70
Colour temperature (CCT)	: 3000K ~ 6000K
<i>Other CCT &amp; CRI available upon request</i>	
Weight	: 5.9 kg - 9.8 kg
Wattage	: 50W ~ 240W
Nominal efficacy	: 110 ~ 135 lm/W
Useful life	: 50,000 hours ~ Base on the light source
Operating temperature range (Ta)	: -25°C ~ 40°C
Driver	: Built-in high efficiency system
Main voltage	: 100 ~ 240V / 50 ~ 60Hz

## Optional

Remote Control System & Smart Intelligent System available upon request



Energy saving with remote control system



Network for smart intelligent system

## Features

- High pressure die cast aluminium alloy housing.
- Corrosion resistant.
- Finished with polyester powder paint.
- Standard color grey.
- Anti-aging silicone rubber gasket.
- Bracket made of galvanized steel painted in grey colour.
- Clear tempered glass.
- Stainless steel screws.

## Product Speciality



Curvey & Aesthetics design



Adjustable Angle



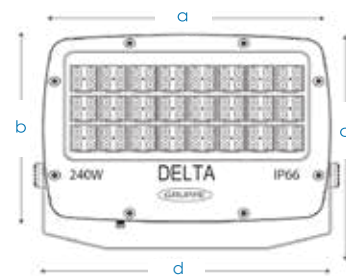
ThermalSafe® Thermal system

**Ordering Code Dimension : DELTA PRO**

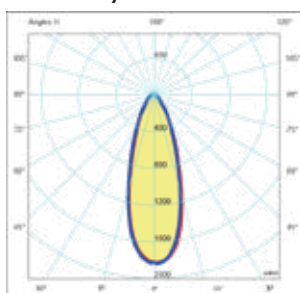
Code	Wattage	Leds	Nominal Flux	a	b	c	d	e	Weight(kg)
DEP10050	100W	48	12000	391	296	345	432	50	6.1
DEP12050	120W	48	14400	391	296	345	432	50	6.1
DEP15050	150W	48	18000	391	296	345	432	50	6.1
DEP18050	180W	72	21600	501	381	435	432	50	9.6
DEP20050	200W	72	24000	501	381	435	543	50	9.7
DEP24050	240W	96	28800	501	381	435	543	50	9.9

\* The above ordering code is base on CCT~5000K

**Dimension (mm)**



**Photometry T25**



**Photometry T60**

