

UNI ECO Flood Lighting



Application

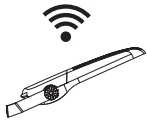
Highmast, Sports, Underpass, Tunnel, Security, Port, Airport, Facade Industrial. Architectural, landscape, Multipurpose Hall

Characteristic

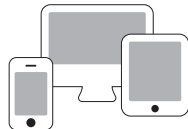
Light source	: High performance LED
Optical	: Multiple beam : PC lens modules
Power correction factor	: > 0.9
Insulation	: Class 1
Compliance	: MS IEC 60598-1 MS IEC 60598-2-5
Ingress Protection (IP)	: IP66
Protection against surge (SPD)	: 20KA
Colour rendering (CRI)	: ≥ 70
Colour temperature (CCT)	: 3000K ~ 6500K
<i>Other CCT & CRI available upon request</i>	
Weight	: 4.2kg - 12.8kg
Wattage	: 100W ~ 600W
Nominal efficacy	: 130 ~ 150 lm/W
Useful life	: >50,000 hours ~ Base on the light source
Operating temperature range (Ta)	: -40°C ~ 50°C
Driver	: Built-in high efficiency system
Main voltage	: 100~277V / 50~60Hz

Optional

Remote Control System & Smart Intelligent System available upon request



Energy saving with remote control system

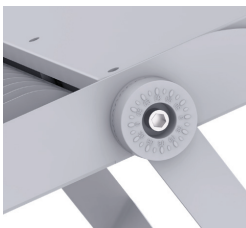


Network for smart intelligent system

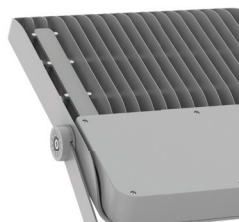
Features

- Die cast aluminium alloy housing.
- Corrosion resistant.
- Finished with polyester powder paint.
- Bracket made of galvanized steel painted in grey color.
- Anti-aging silicone rubber gasket.
- Clear tempered glass.
- Stainless steel screws.

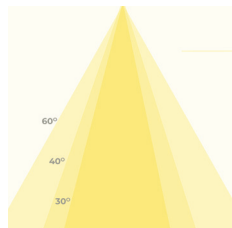
Product Speciality



Adjustable Angle



Excellent Heat Dissipation



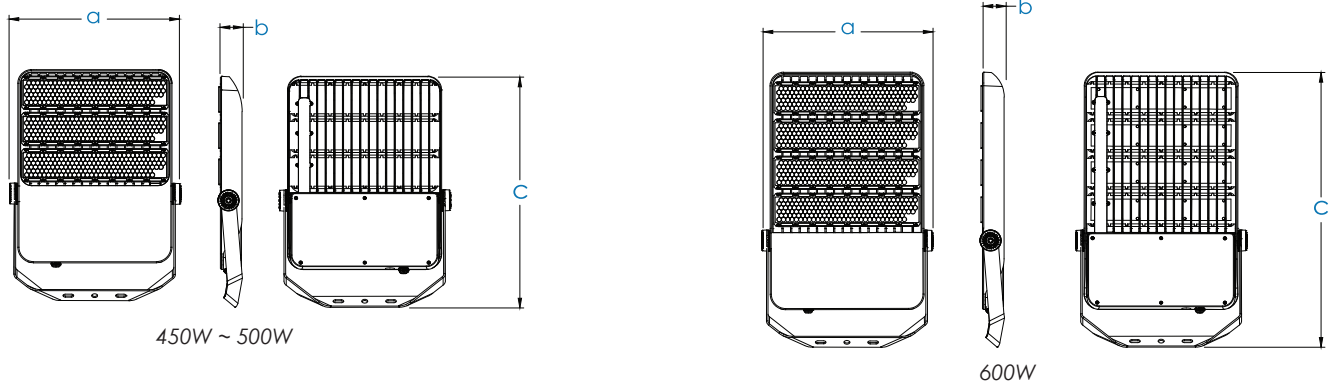
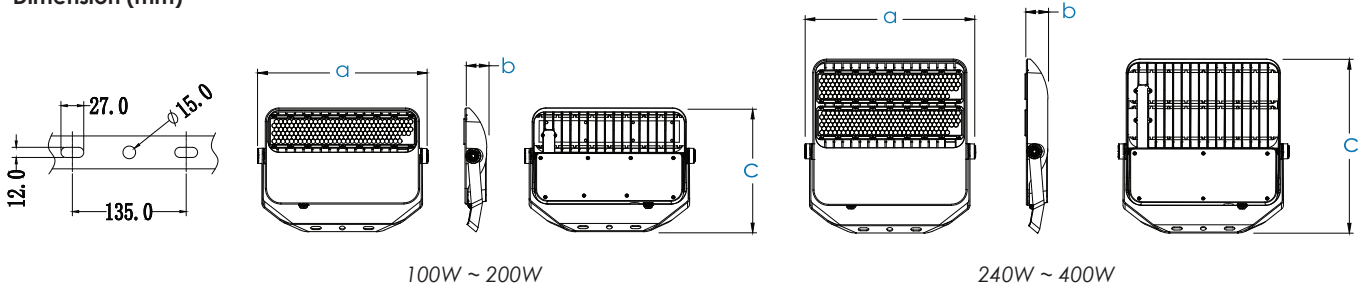
Various Beam Angle & Coverage

Ordering Code Dimension : UNI ECO

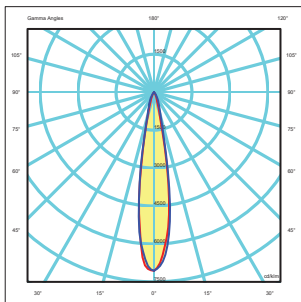
Code	Wattage	Leds	Nominal Flux	a	b	c	Weight(kg)
UEC10050	100W	180	14500	435	58	317	4.2
UEC15050	150W	180	21750	435	58	317	4.2
UEC20050	200W	180	29000	435	58	317	4.2
UEC24050	240W	360	34800	435	59	446	6.5
UEC30050	300W	360	43500	435	59	446	6.5
UEC40050	400W	360	58000	435	59	446	6.5
UEC45050	450W	540	65250	437	59	593	9.8
UEC50050	500W	540	72500	437	59	593	9.8
UEC60050	600W	720	87000	437	59	706	12.8

* The above ordering code is base on CCT~5000K

Dimension (mm)



Photometry 20D



Photometry 60D

