

■ AQUALED Industrial Lighting

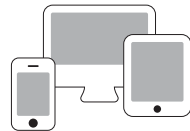


Optional

Remote Control System & Smart Intelligent System available upon request



Energy saving with remote control system



Network for smart intelligent system

Application

Parking Area, Canopy, Loading Bays, Industrial, Production Area, Integrated Transit, Factories and Foundries

Characteristic

Light source	: LED
Power correction factor	: > 0.9
Insulation	: Class II
Compliance	: EN 60598-1, EN 60596-2-1 EN 62493
Ingress Protection (IP)	: IP65
Colour rendering (CRI)	: ≥ 80
Colour temperature (CCT)	: 3000K ~ 6000K
<i>Other CCT & CRI available upon request</i>	
Weight	: 1.0kg ~ 2.0kg
Wattage	: 10W , 20W (Single Module) : 18W , 36W (Double Module)
Nominal efficacy	: 80 ~ 100 lm/W
Useful life	: > 30,000 hours ~Base on the light source
Operating temperature range (Ta)	: -20°C ~ 40°C
Driver	: Built-in high efficiency system
Main voltage	: 220~240V / 50~60Hz

Features

- High pressure plastic injection moulding.
- UV stabilized PC body and diffuser.
- Diffuser hinged to the body with PC clip on toggles.
- Pleasant appearance and reduce direct glare.
- Excellent light distribution.
- Stainless steel clip upon request.

Product Speciality



High Impact Polycarbonate Body & Diffuser



Replaceable LED Module



No Clip Design Easy for Maintenance



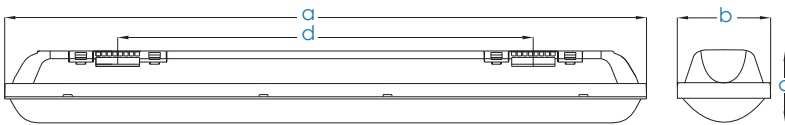
Fast Cable Gland & Connection Box Easy Installation

Ordering Code Dimension : AQUALED

Code	Wattage	Nominal Flux	a	b	c	d	Weight(kg)
AQU01060	10W	850	600	58	66	380 ± 10	1.0
AQU01860	18W	1530	600	86	66	380 ± 10	1.2
AQU02060	20W	1700	1200	58	66	970 ± 10	1.5
AQU03660	36W	3060	1200	86	66	970 ± 10	2.0

* The above ordering code is base on CCT~6000K

Dimension (mm)



Photometry 120D

