

■ PERCORSO II Road Lighting

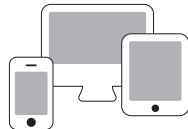


Optional

Remote Control System & Smart Intelligent System available upon request



Energy saving with remote control system



Network for smart intelligent system

Application

Perimeter, Roadway, Parking, Compound, Architectural and Landscape.

Characteristic

| | |
|---|---|
| Light source | : LED |
| Optical | : Multiple beams : Anti glare optic |
| Power correction factor | : > 0.9 |
| Insulation | : Class 1 |
| Compliance | : MS IEC 60598-1, MS IEC 60598-2-3 IEC 62722 |
| Ingress Protection (IP) | : IP66 |
| Protection against surge (SPD) | : 10KA ~ 20KA |
| Colour rendering (CRI) | : ≥ 70 |
| Colour temperature (CCT) | : 3000K ~ 6000K |
| <i>Other CCT & CRI available upon request</i> | |
| Weight | : 5.0kg ~ 15.2kg |
| Wattage | : 40W ~ 240W |
| Nominal efficacy | : 110 ~ 130 lm/W |
| Useful life | : > 50,000 hours ~ Base on the light source |
| Operating temperature range (Ta) | : -25°C ~ 50°C |
| Driver | : Built-in high efficiency system |
| Main voltage | : 100~240V / 50~60Hz |

Features

- High pressure die cast aluminium alloy housing.
- Corrosion resistant.
- Finished with polyester powder paint.
- Standard colour grey.
- Flexibility on pole top or side entry.
- Adjustable mounting spigot for tilting and mounting.
- Anti-aging silicone rubber gasket.
- Clear tempered glass
- Stainless steel screws and clips.

Product Speciality



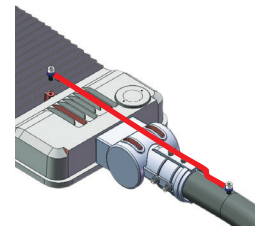
Robust & Sleek Design



GlareSafe®
Multiple lens



ThermalSafe®
Thermal system



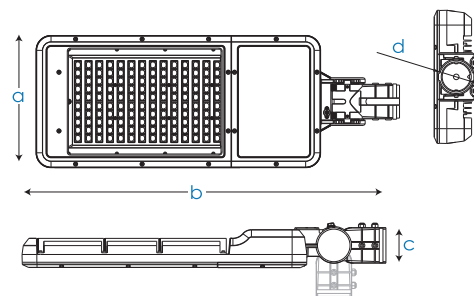
Anti Drop System

Ordering Code Dimension : PERCORSO II

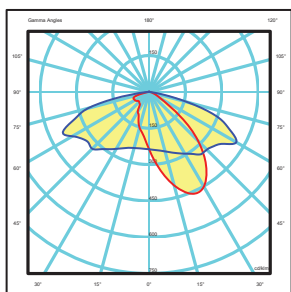
| Code | Wattage | Leds | Nominal Flux | a | b | c | d | Weight(kg) |
|----------|---------|------|--------------|-----|-----|-----|----|------------|
| PE204030 | 40W | 24 | 4600 | 220 | 530 | 78 | 60 | 5.0 |
| PE206030 | 60W | 24 | 6900 | 250 | 628 | 80 | 60 | 7.3 |
| PE208030 | 80W | 40 | 9200 | 280 | 790 | 93 | 60 | 12.0 |
| PE212030 | 120W | 60 | 13800 | 280 | 790 | 93 | 60 | 12.2 |
| PE215030 | 150W | 60 | 17250 | 280 | 790 | 93 | 60 | 12.2 |
| PE218030 | 180W | 80 | 20700 | 320 | 850 | 105 | 60 | 14.8 |
| PE220030 | 200W | 96 | 23000 | 320 | 850 | 105 | 60 | 15.0 |
| PE224030 | 240W | 112 | 27600 | 320 | 850 | 105 | 60 | 15.2 |

* The above ordering code is base on CCT~3000K

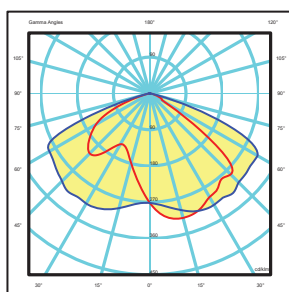
Dimension (mm)



Photometry T2A



Photometry T3A



Photometry T3M

