

XSTAR Road Lighting

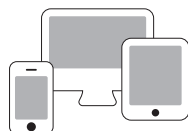


Optional

Remote Control System & Smart Intelligent System available upon request



Energy saving with remote control system



Network for smart intelligent system

Features

- High pressure die cast aluminium alloy housing.
- Corrosion resistant.
- Finished with polyester powder paint.
- Standard colour grey.
- Anti-aging silicone rubber gasket.
- Clear tempered glass.
- Tool free maintenance.
- Easy access from the top for maintenance.

Application

Perimeter, Roadway, Parking, Compound, Architectural and Landscape.

Characteristic

Light source	: LED
Optical	: PC Lens modules : Multiple beams : Anti glare optic
Power correction factor	: > 0.9
Insulation	: Class 1
Compliance	: MS IEC 60598-1, MS IEC 60598-2-3 IEC 62722
Ingress Protection (IP)	: IP66
Protection against surge (SPD)	: 20KA
Colour rendering (CRI)	: ≥ 70
Colour temperature (CCT)	: 3000K ~ 6000K
<i>Other CCT & CRI available upon request</i>	
Weight	: 6.0 kg ~ 10.0 kg
Wattage	: 60W ~ 200W
Nominal efficacy	: 110 ~ 135 lm/W
Useful life	: > 50,000 hours ~ <i>Base on the light source</i>
Operating temperature range (Ta)	: -20°C~ 40°C
Driver	: Built-in high efficiency system
Main voltage	: 200 ~ 240V / 50~60Hz

Product Speciality



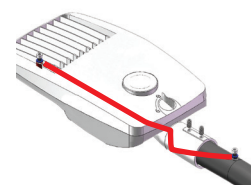
Top Opening Easy Maintenance



Toolless Opening



Nema & Zhaga Compatible



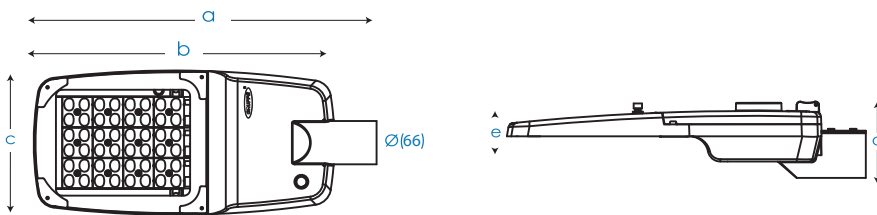
Anti Drop System

Ordering Code Dimension : XSTAR

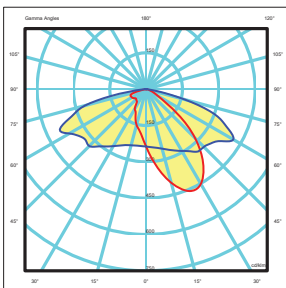
Code	Wattage	Leds	Nominal Flux	a	b	c	d	e	Weight(kg)
STA06030	60W	96	7200	570	500	240	119	53	6.2
STA08030	80W	128	9600	570	500	240	119	53	6.4
STA10030	100W	144	12000	570	500	240	119	53	6.4
STA12030	120W	192	14400	570	500	240	119	53	6.9
STA15030	150W	256	18000	720	650	330	118	52	9.4
STA18030	180W	256	21600	720	650	330	118	52	9.5
STA20030	200W	320	24000	720	650	330	118	52	9.8

* The above ordering code is base on CCT~3000K

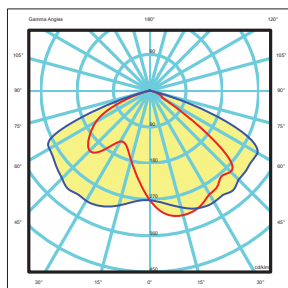
Dimension (mm)



Photometry T2A



Photometry T3A



Photometry T3M

