

## ■ REMOTE ISOLAR LED Solar Lighting



### Application

Street & Highway Lighting, Parking Lot & Area Lighting, Pedestrian.

### Luminaire Characteristic

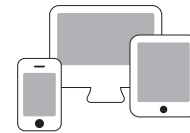
Housing	: Aluminium Alloy
Finishing	: Grey
Solar panel	: Monocrystalline
Light distribution	: Type II, Type III, Type IV
Ingress Protection (IP)	: IP66
Colour rendering (CRI)	: $\geq 70$
Colour temperature (CCT)	: 3000K ~ 6000K
<i>Other CCT &amp; CRI available upon request</i>	
Weight	: 15 kg ~ 80kg
Color temperature (CCT)	: 100 ~ 150 lm/W
Charging time	: > 6 hours
Discharge time	: > 12 hours/night
Working mode	: 4hr - 100%, 2hr - 60%, 6hr - 40%

### Optional

Remote Control System & Smart Intelligent System available upon request

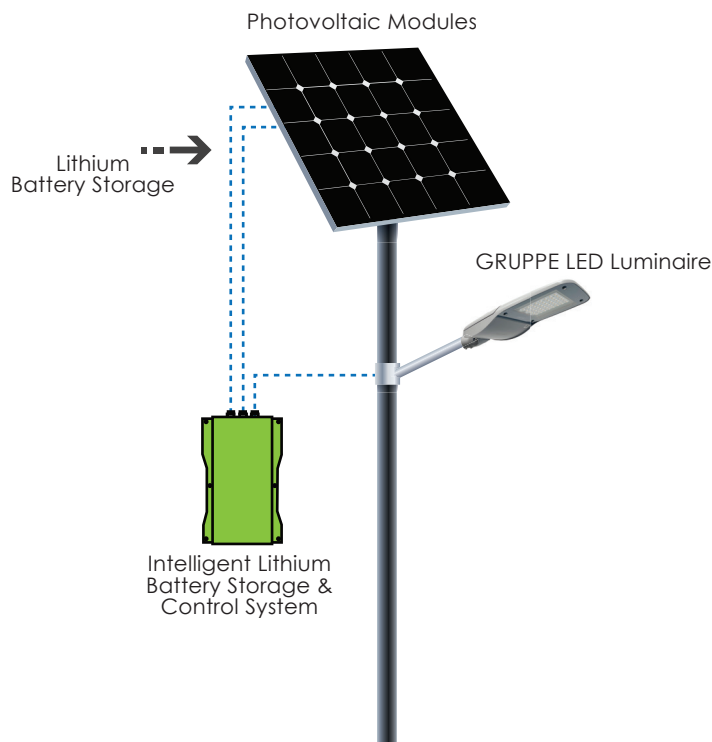


Energy saving with remote control system



Network for smart intelligent system

### Product Speciality



### General Information

Recommended installation height : 2m to 12m

Autonomy days : 2 days

ALFA	PERCORSO III	Wattage	Lithium Battery	Solar Panel
ALF03030	N/A	30W	570Wh	100W
N/A	PE304030	40W	760Wh	130W
ALF06030	PE306030	60W	1140Wh	260W
N/A	PE308030	80W	1520Wh	300W
ALF09030	N/A	90W	1710Wh	360W
N/A	PE310030	100W	1900Wh	360W
ALF12030	PE312030	120W	2280Wh	380W
ALF15030	PE315030	150W	2850Wh	2 x 240W
ALF18030	PE318030	180W	3420Wh	2 x 300W

