

■ UNIBOX Flood Lighting



Application

Area Lighting, Industrial Lighting, Sports Lighting, Port Wharf Lighting, Tennis Lighting, etc.

Characteristic

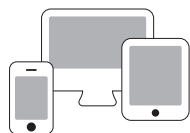
Light source	: High Power LED
Optical	: Multiple Beam
Power correction factor	: > 0.9
Insulation	: Class 1
Compliance	: IEC 60598-1 IEC 60598-2-5
Ingress Protection (IP)	: IP65
Protection against surge (SPD)	: 20KA
Colour rendering (CRI)	: ≥ 70
Colour temperature (CCT)	: 3000K ~ 6000K
<i>Other CCT & CRI available upon request</i>	
Luminaire Weight	: 21.0 kg
Wattage	: 440W ~ 540W
Nominal efficacy	: 140 ~ 155 lm/W
Useful life	: > 50,000 hours ~ Base on the light source
Operating temperature range (Ta)	: -30°C ~ 40°C
Driver	: Built-in high efficiency system
Main voltage	: 120 ~ 277V / 50 ~ 60Hz

Optional

Remote Control System & Smart Intelligent System available upon request



Energy saving with remote control system



Network for smart intelligent system

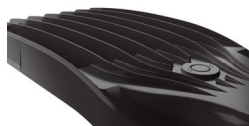
Features

- Heavy duty die cast aluminum housing
- Corrosion resistant.
- Finished with polyester powder paint.
- Standard color black.
- Anti-aging silicone rubber gasket.
- High performance design flexibility and combination of optics.
- Bracket made of die-cast aluminium painted in black color.
- Stainless steel screws.
- Compact and light weight.

Product Speciality



Sleek & Robust Design



ThermalSafe® Thermal system



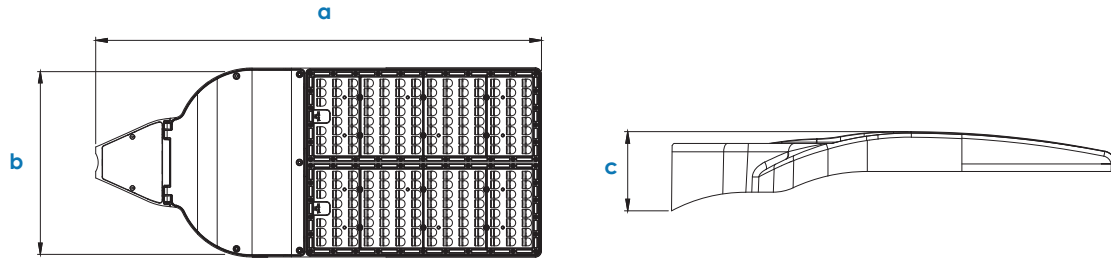
Fixture Mounting :
Mast Arm Mount &
Straight Arm Mount

Ordering Code Dimension : UNIBOX

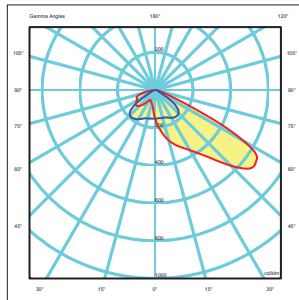
Code	Wattage	Nominal Flux	a	b	c	Weight(kg)
BOX44050	440W	61600	959	406	170	21.0
BOX54050	540W	75600	976	406	130	21.0

* The above ordering code is base on CCT~5000K

Dimension (mm)



Photometry AT4



Photometry T4S

