

# AQUALED 7 SMART Industrial Lighting



## Application

Parking Area, Canopy, Loading Bays, Industrial, Production Area, Integrated Transit, Factories and Foundries

## Characteristic

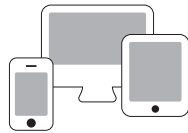
Light source	: LED
Power correction factor	: > 0.9
Insulation	: Class II
Ingress Protection (IP)	: IP66
Colour rendering (CRI)	: ≥ 80
Colour temperature (CCT)	: 4000K ~ 6000K
<i>Other CCT &amp; CRI available upon request</i>	
Wattage	: 9W ~ 70W
Nominal efficacy	: >120 lm/W
Useful life	: > 50,000 hours ~Base on the light source
Operating temperature range (Ta)	: -25°C ~ 40°C
Driver	: Built-in high efficiency system
Main voltage	: 220~240V / 50~60Hz

## Optional

Remote Control System & Smart Intelligent System available upon request



Energy saving with remote control system



Network for smart intelligent system

## Features

- Durable and lightweight
- Injection mould polycarbonate body and diffuser
- Easy looking stainless steel clips
- Pleasant appearance and reduce direct glare
- Excellent light distribution
- Motion Detecting
- On/Off Function

## Product Speciality



High Impact Polycarbonate Body & Diffuser



Replaceable LED Module



No Clip Design Easy for Maintenance



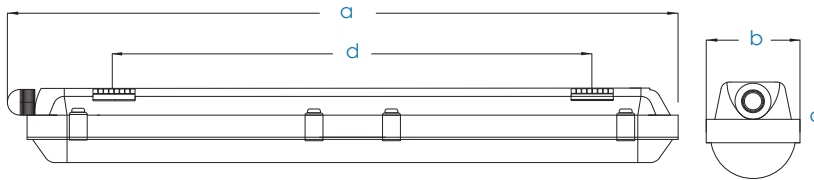
Smart Sensor

### Ordering Code Dimension : AQUALED 7 SMART

Code	Wattage	Nominal Flux	a	b	c	Install Size(d)
AQ700960	9W	1080	600	79	68	340
AQ701860	18W	2160	600	79	68	340
AQ702060	20W	2400	1200	79	68	820
AQ702560	25W	3000	1500	79	68	1120
AQ703460	34W	4080	1800	79	68	1420
AQ703660	36W	4320	1500	79	68	820
AQ705060	50W	6000	1200	79	68	1120
AQ707060	70W	8400	1800	79	68	1420

\* The above ordering code is base on CCT~6000K

### Dimension (mm)



### Photometry 120D

