

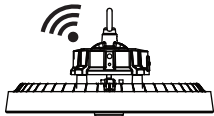
■ ICON PLUS Industrial Lighting

www.gruppelighting.com

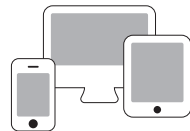


Optional

Remote Control System & Smart Intelligent System available upon request



Energy saving with remote control system



Network for smart intelligent system

Application

Factories, Warehouses, Logistic Halls, Production Facilities, Exhibition Hall, Showroom, Indoor Arena.

Characteristic

Light source	: LED
Power correction factor	: > 0.95
Insulation	: Class 1
Compliance	: IEC 60598-1
Ingress Protection (IP)	: IP65
Colour rendering (CRI)	: ≥ 70
Colour temperature (CCT)	: 3000K ~ 6500K
<i>Other CCT & CRI available upon request</i>	
Weight	: 1.8kg ~ 2.5kg
Wattage	: 100W ~ 240W
Nominal efficacy	: 150lm/W - 190 lm/W upon request
Useful life	: > 50,000 hours ~Base on the light source
Operating temperature range (Ta)	: - 40°C ~ 50°C
Driver	: Built-in high efficiency system
Main voltage	: AC 100 ~ 240V / 50-60Hz

Features

- Die-cast aluminium housing.
- Corrosion resistant.
- Finished with polyester powder paint.
- Standard colour black.
- Clear PC cover
- Integral control gear mounted on the housing for easy maintenance.
- Stainless steel screws.

Product Speciality



Simplicity & Light Weight



Optional:
U-Bracket Mounting



Optional :
Bluetooth or
Remote Control



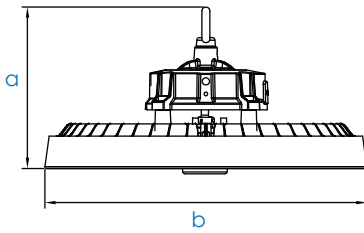
Optional :
Aluminum / PC reflector

Ordering Code Dimension : ICON PLUS

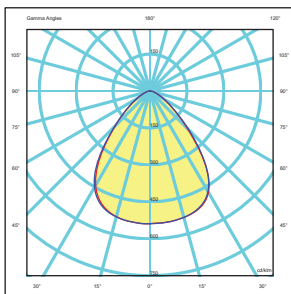
Code	Wattage	Nominal Flux	a	b	Weight(kg)
ICP10065	100W	19000	∅255	170	1.8
ICP15065	150W	28500	∅255	170	1.8
ICP20065	200W	38000	∅300	173	2.2
ICP24065	240W	45600	∅365	173	2.5

* The above ordering code is base on CCT~6500K

Dimension (mm)



Photometry 90D



Photometry 120D

