

■ EVO Road Lighting

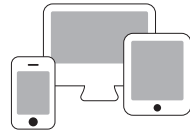


Optional

Remote Control System & Smart Intelligent System available upon request



Energy saving with remote control system



Network for smart intelligent system

Application

Perimeter, Roadway, Parking, Compound, Architectural and Landscape.

Characteristic

| | |
|---|---|
| Light source | : High power LED |
| Optical | : Multiple beams |
| | : Anti glare optic |
| Power correction factor | : > 0.9 |
| Insulation | : Class 1 |
| Compliance | : IEC 60598-1, IEC 60598-2-3 |
| Ingress Protection (IP) | : IP66 |
| Protection against surge (SPD) | : 10KA ~ 20KA |
| Colour rendering (CRI) | : ≥ 70 |
| Colour temperature (CCT) | : 3000K ~ 6000K |
| <i>Other CCT & CRI available upon request</i> | |
| Weight | : 4.5kg ~9.0kg |
| Wattage | : 60W ~ 180W |
| Nominal efficacy | : 120 ~ 150 lm/W |
| Useful life | : > 50,000 hours ~ Base on the light source |
| Operating temperature range (Ta) | : -25°C~ 50°C |
| Driver | : Built-in high efficiency system |
| Main voltage | : 200 ~ 240V / 50~60Hz |

Features

- High pressure die cast aluminium alloy housing.
- Corrosion resistant.
- Finished with polyester powder paint.
- Standard colour grey.
- Clip on closure.
- Adjustable mounting spigot for tilting and mounting.
- Anti-aging silicone rubber gasket.
- Clear tempered glass.
- Easy access from the top for maintenance.

Product Speciality



Top Opening Easy Maintenance



Knife Switch



Side Entry



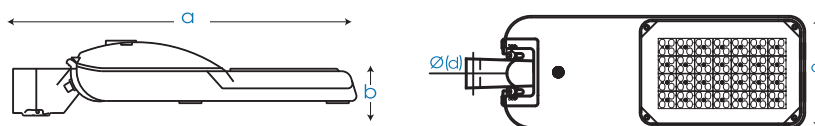
Post Top

Ordering Code Dimension : EVO

| Code | Wattage | Leds | Nominal Flux | a | b | c | d | Weight(kg) |
|----------|---------|------|--------------|-----|-----|-----|----|------------|
| EVZ02030 | 20W | 12 | 2600 | 459 | 124 | 190 | 60 | 3.8 |
| EVZ04030 | 40W | 12 | 5200 | 459 | 124 | 190 | 60 | 3.8 |
| EVZ06030 | 60W | 24 | 7800 | 459 | 124 | 190 | 60 | 3.8 |
| EVZ08030 | 80W | 36 | 10400 | 560 | 130 | 210 | 60 | 5.0 |
| EVZ10030 | 100W | 36 | 13000 | 560 | 130 | 210 | 60 | 5.0 |
| EVZ12030 | 120W | 45 | 15600 | 690 | 133 | 260 | 60 | 9.0 |
| EVZ15030 | 150W | 72 | 19500 | 690 | 133 | 260 | 60 | 9.0 |
| EVZ18030 | 180W | 72 | 23400 | 690 | 133 | 260 | 60 | 9.0 |

* The above ordering code is base on CCT~3000K

Dimension (mm)



Photometry T3M

